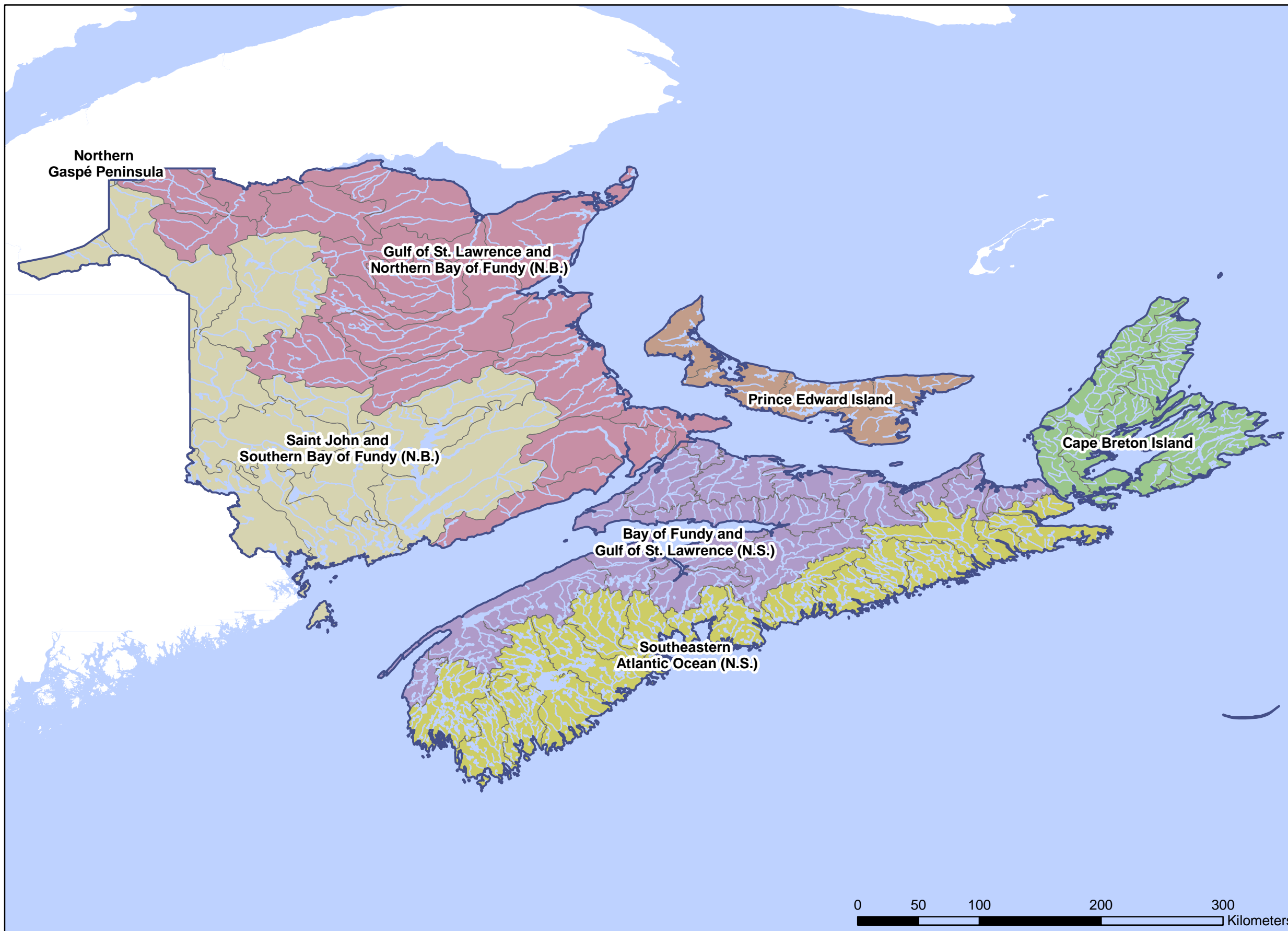











# Drainage Areas of the Maritime Provinces



## Legend

### Sub-drainage area

-  Bay of Fundy and Gulf of St. Lawrence (N.S.)
-  Cape Breton Island
-  Gulf of St. Lawrence and Northern Bay of Fundy (N.B.)
-  Northern Gaspé Peninsula
-  Prince Edward Island
-  Saint John and Southern Bay of Fundy (N.B.)
-  Southeastern Atlantic Ocean (N.S.)

### Sub-sub-drainage area



Source: National Scale Frameworks Hydrology - Drainage Areas, Canada (2003)  
The Atlas of Canada - Natural Resources Canada, Canada Centre for Remote Sensing

